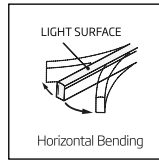


MONTANA

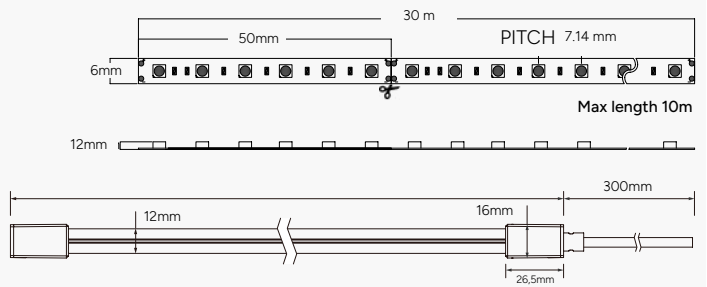
12W/m · IP67 · 24V · CRI>90

Power 12 W/m
Life Time 75.000 h
PCB Thickness 3 oz
Voltage 24V
CRI >90
SDMC ≤3

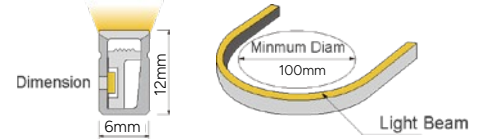


Code	CCT (K)	Lumen output
84370	● 2700K	380 Lm/M
84371	● 3000K	400 Lm/M
84372	○ 4000K	420 Lm/M
84373	● 6000K	430 Lm/M

LED SMD 2835
30 m
140 LED/m
Silicone
50 mm
120°
IP 67
Non Flicker



Importante instalar disipador de calor / Important to install heat sink / Important d'installer le dissipateur de chaleur / Importante installare il dissipatore di calore

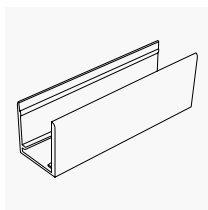


ACCESORIES

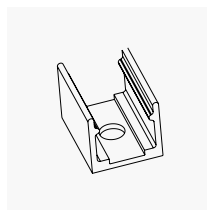
Code	Description
84156	Perfil recto 2 m / Straight profile 2 m / Profilé droit 2 m
84147	Clip de sujeción / Support clip / Clip support
84148	Tapa final / End cap / Embout de fermeture finale
84149	Tapa inicial / Initial cover / Embout de fermeture initiale
84150	Tapa inicial lateral / Side initial cover / Embout de fermeture initiale latérale



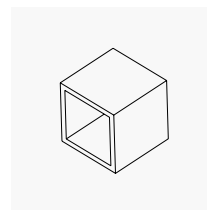
MONTANA



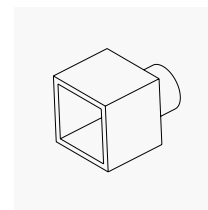
84156



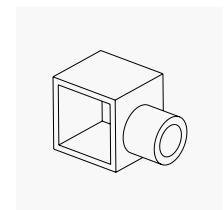
84147



84148



84149



84150